

# The Alabama Central

Walker County, Alabama  
Jasper to Marigold and Sunlight



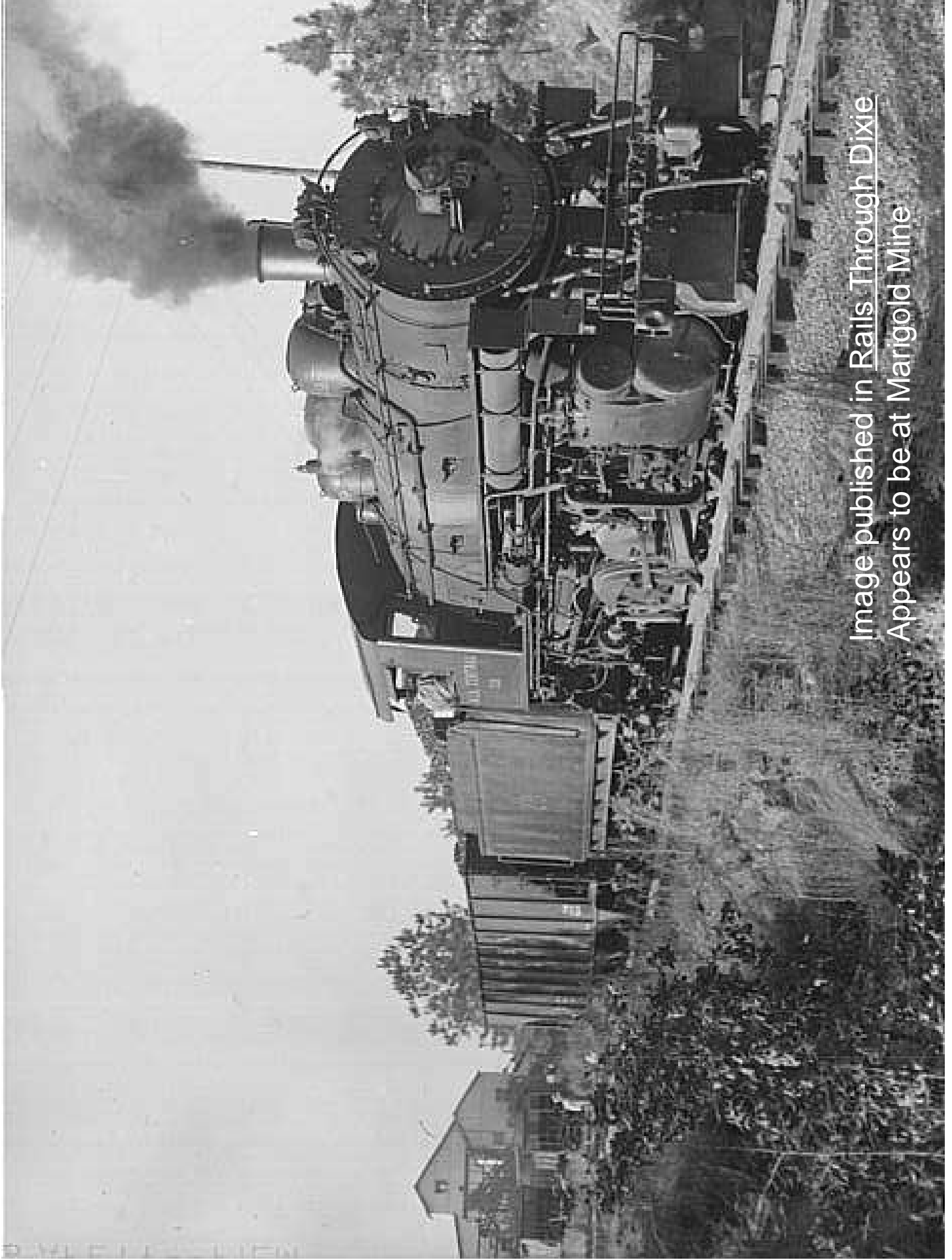
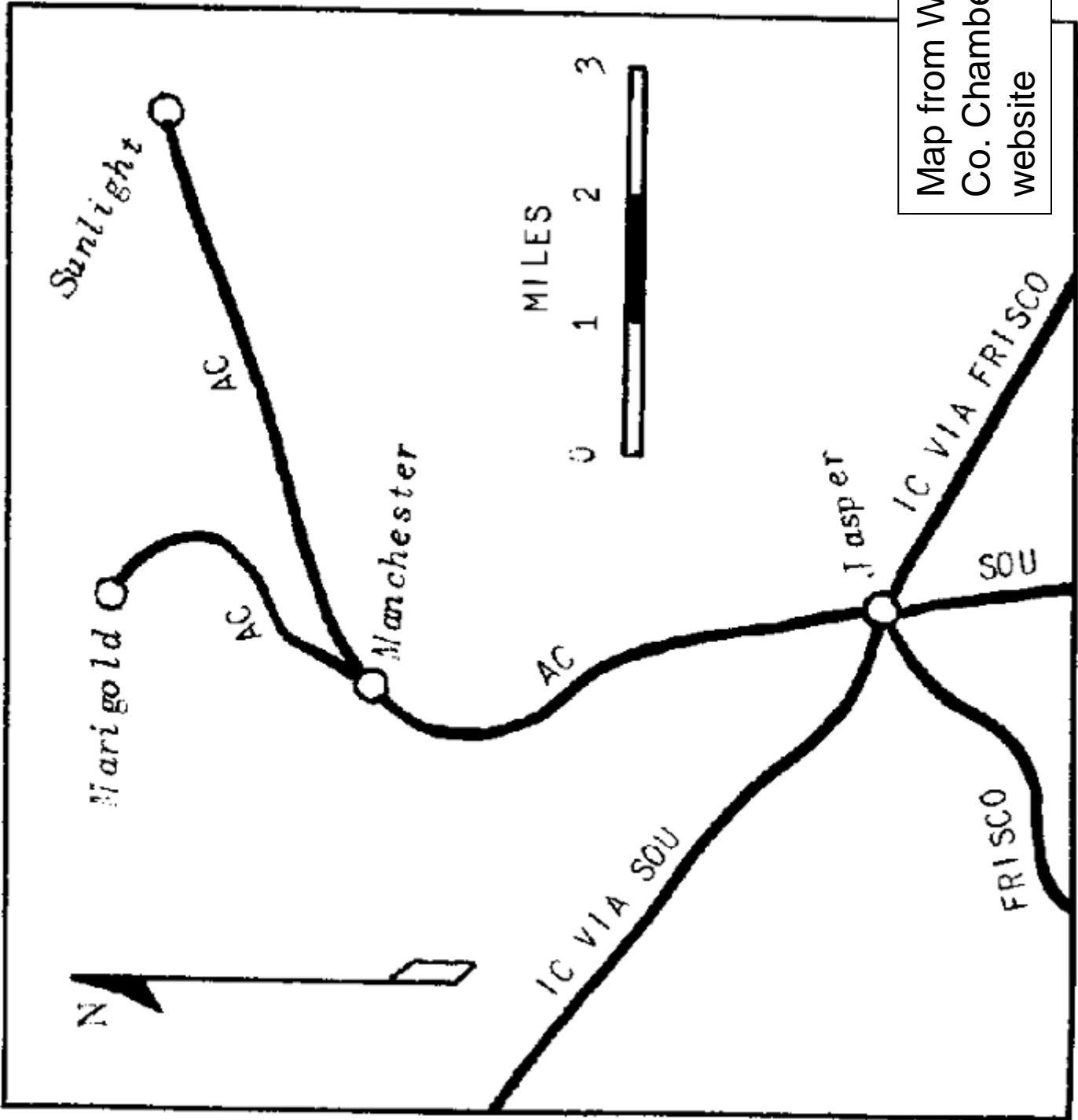


Image published in Rails Through Dixie  
Appears to be at Marigold Mine



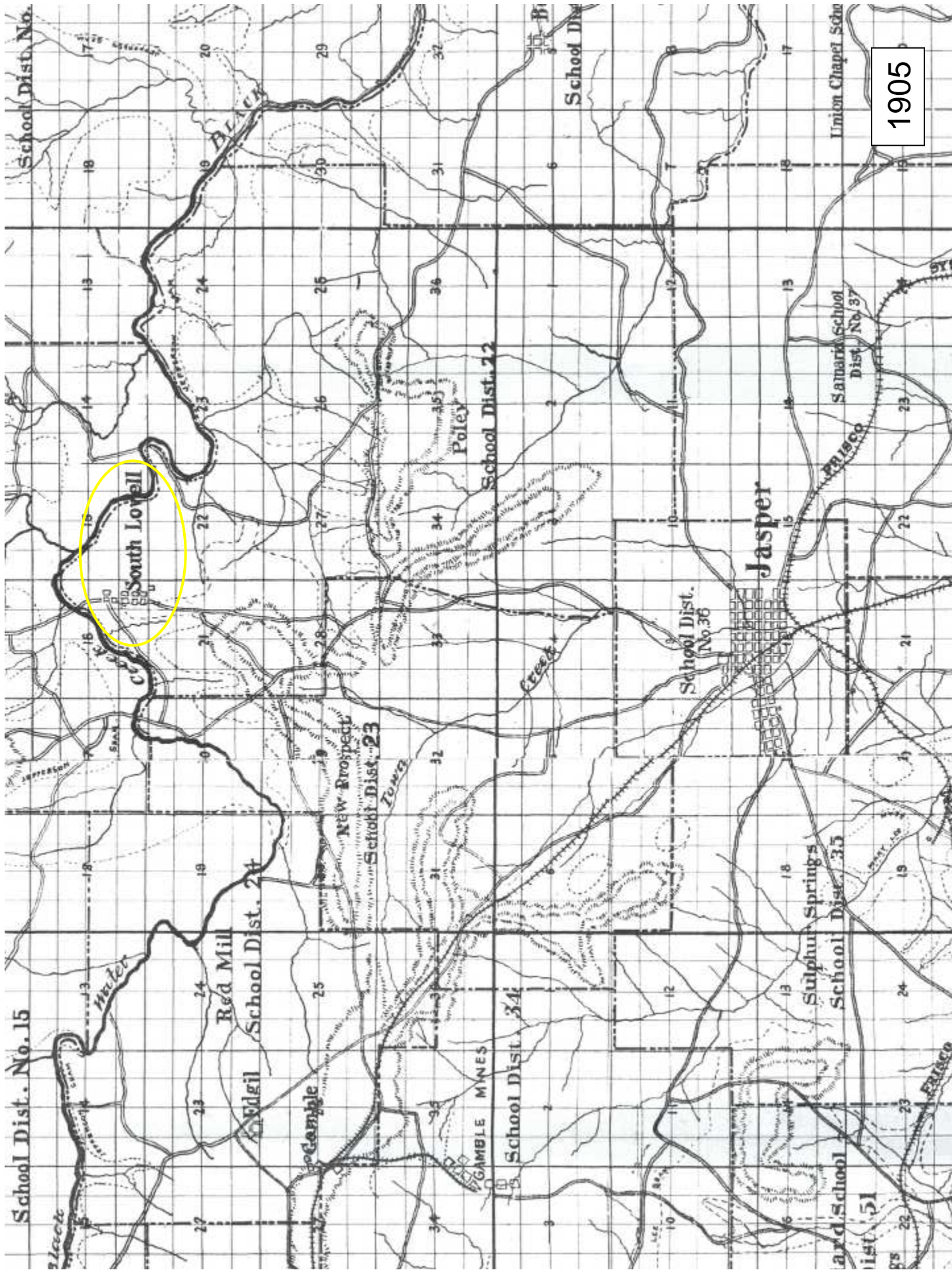
Map from Walker  
Co. Chamber  
website

# The Alabama Central

- Map and aerial image study
  - 1893 USGS maps give no indication
  - 1905 county map gives no indication
  - 1915 SCS (soil survey) map shows line
  - 1937 and 1950 highway maps show line
  - USGS quadrangle maps for 1949 and 1950 show line going to Marigold but not Sunlight
  - 1938 aerial images show line going to Marigold and beyond
  - 1946 aerial image of Sunlight indicates line or roadbed
- Imagery and maps are from the University of Alabama map archive on line unless otherwise noted
- Evaluation and assembly courtesy of Birmingham Rails
  - [www.bhamrails.info](http://www.bhamrails.info)

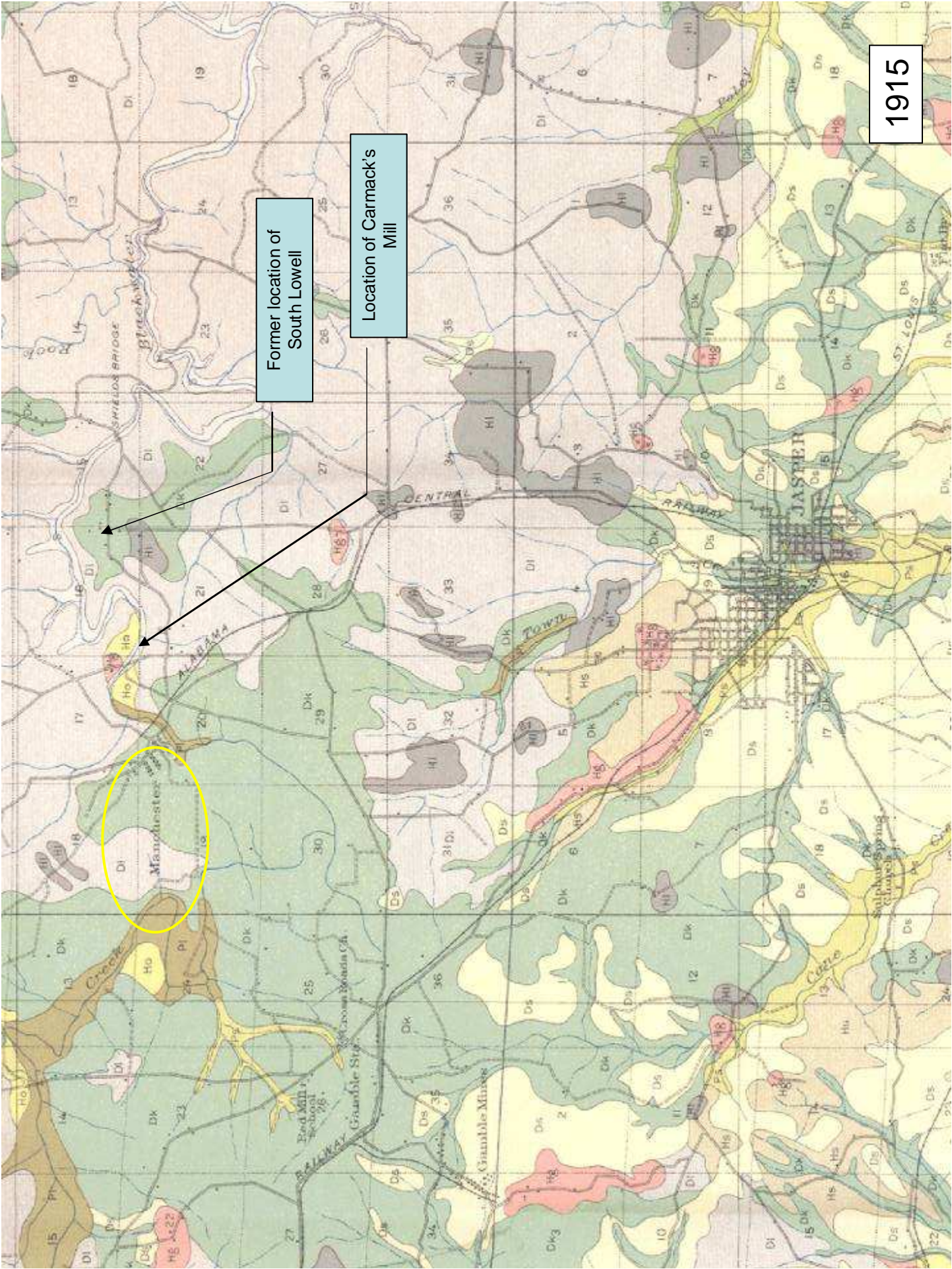


1893



1905

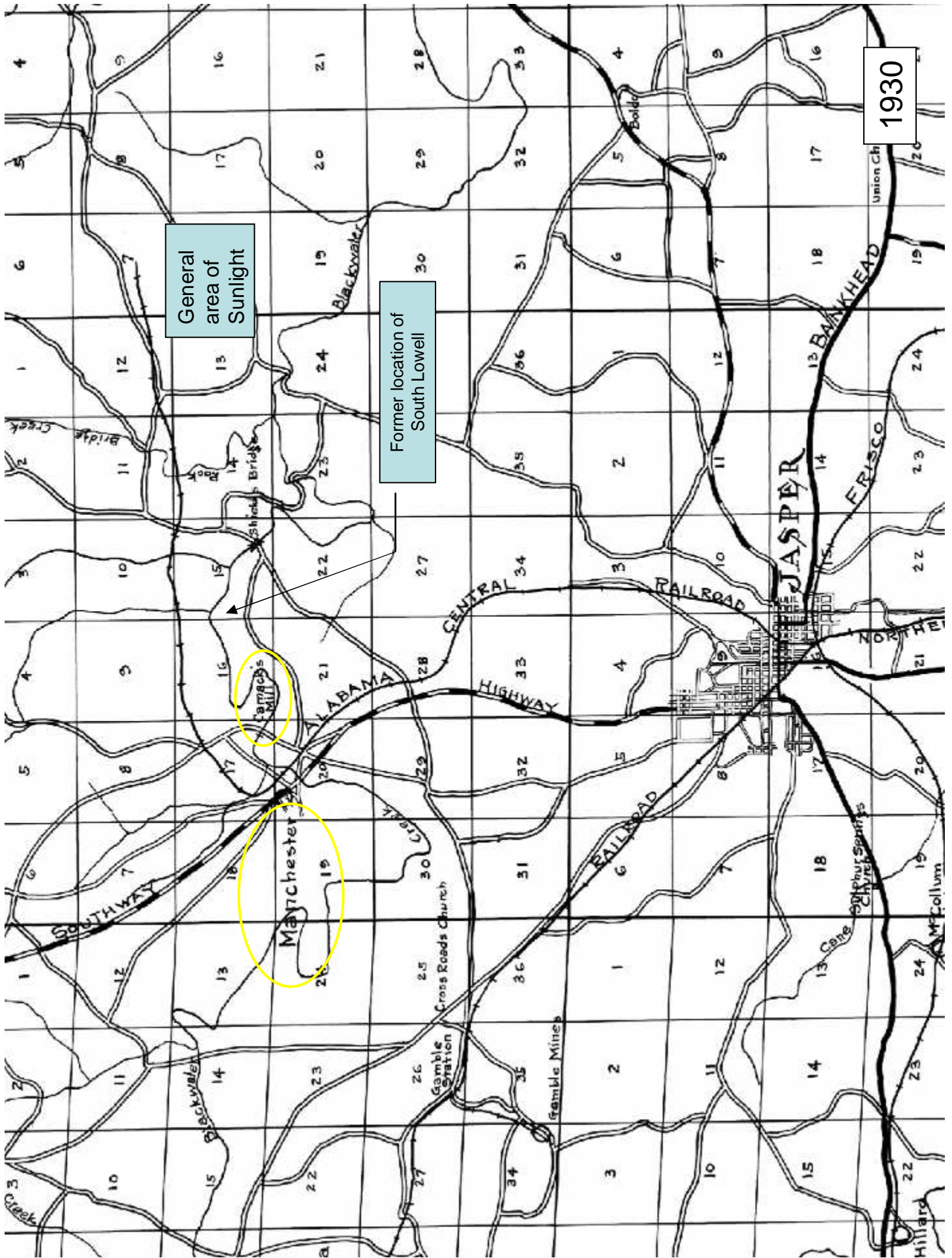
1915



Former location of South Lowell

Location of Carmack's Mill

Manchester



1930

General area of Sunlight

Former location of South Lowell

Gamble's Mill

Manchester

JASPER

ALABAMA CENTRAL RAILROAD  
ALABAMA HIGHWAY

Gamble Station

Gamble Mines

St. Paul's Church

M.F. Collum

Union Ch

BANKHEAD

FRISCO

NORTHERN

Hillard

Bridge Creek

CREEK

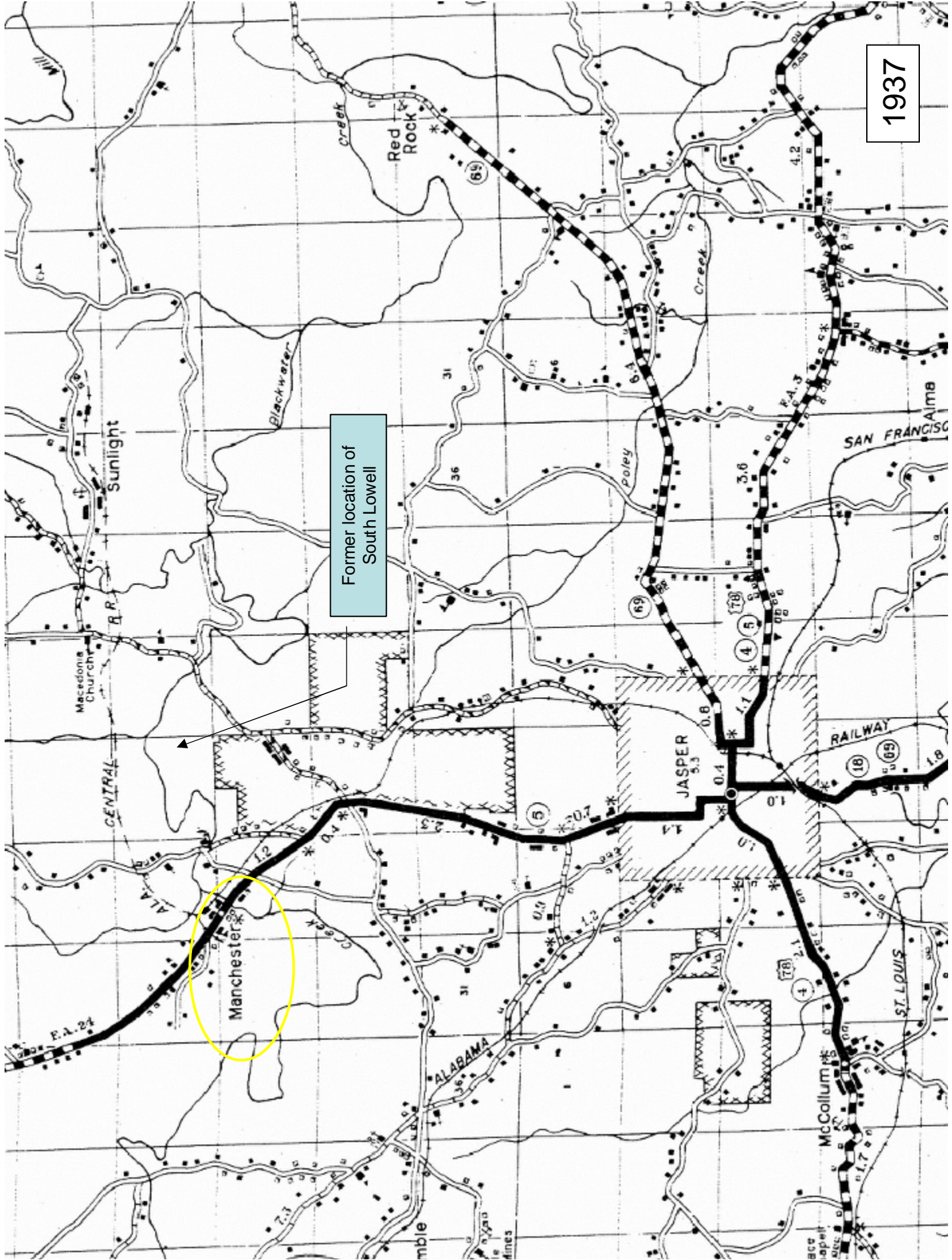
Creek

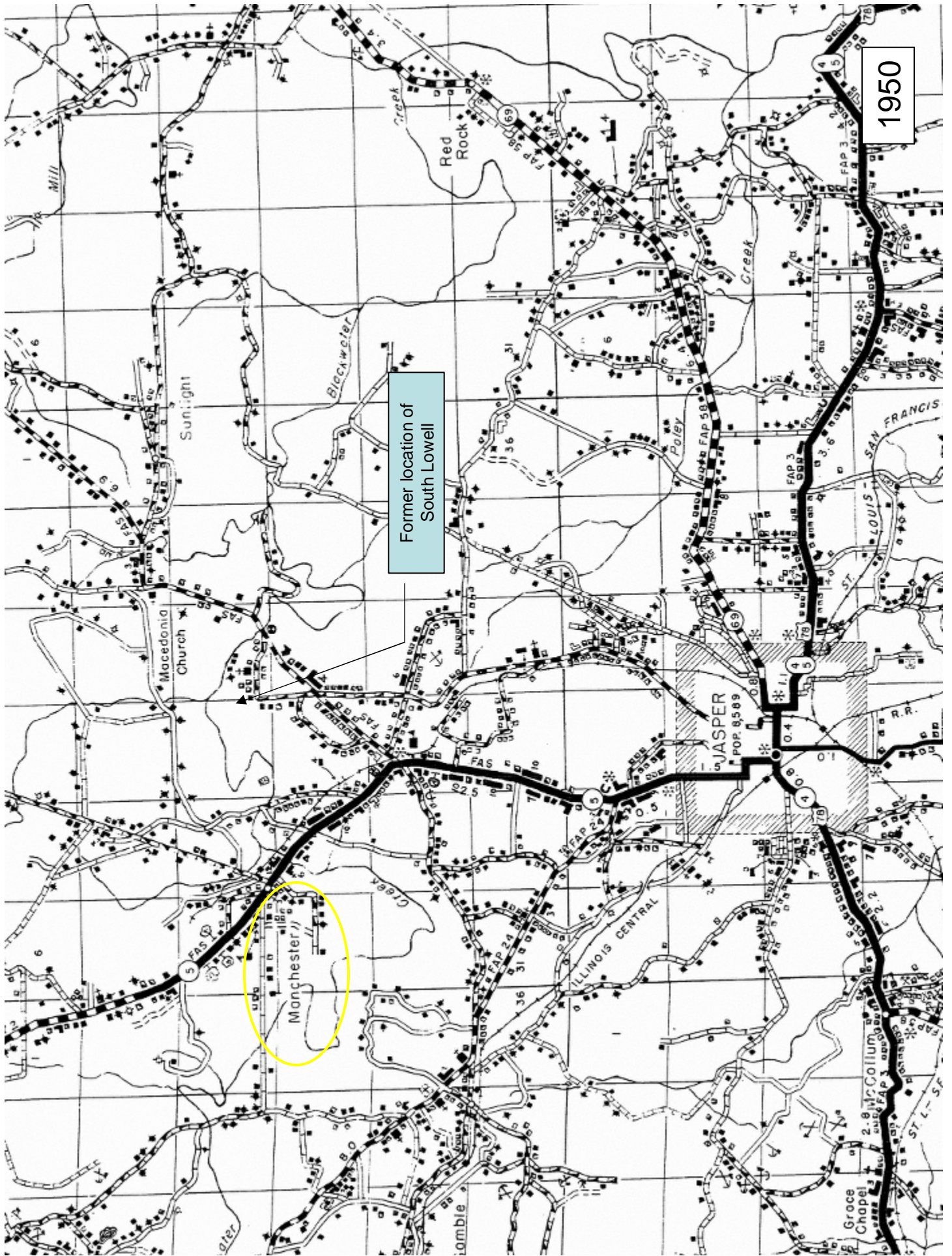


1937

Former location of South Lowell

Manchester





1950

Former location of South Lowell

Manchester

JASPER  
POP. 9,589

ILLINOIS CENTRAL

Grove Chapel

Macdonia Church

Red Rock

Sunlight

Blackwater

Poley Creek

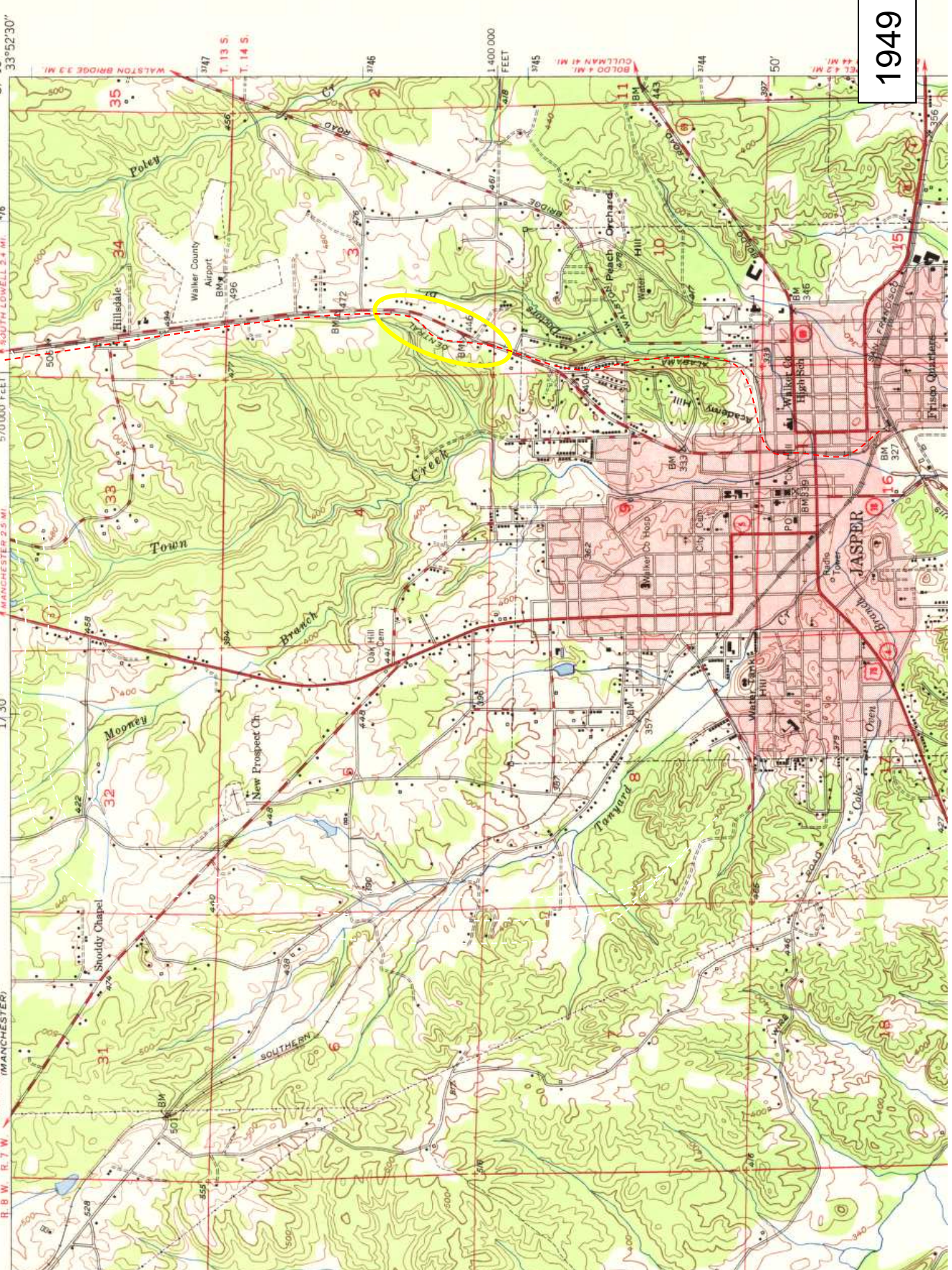
ST. FRANCIS  
LOUIS -

ST. L. - SF

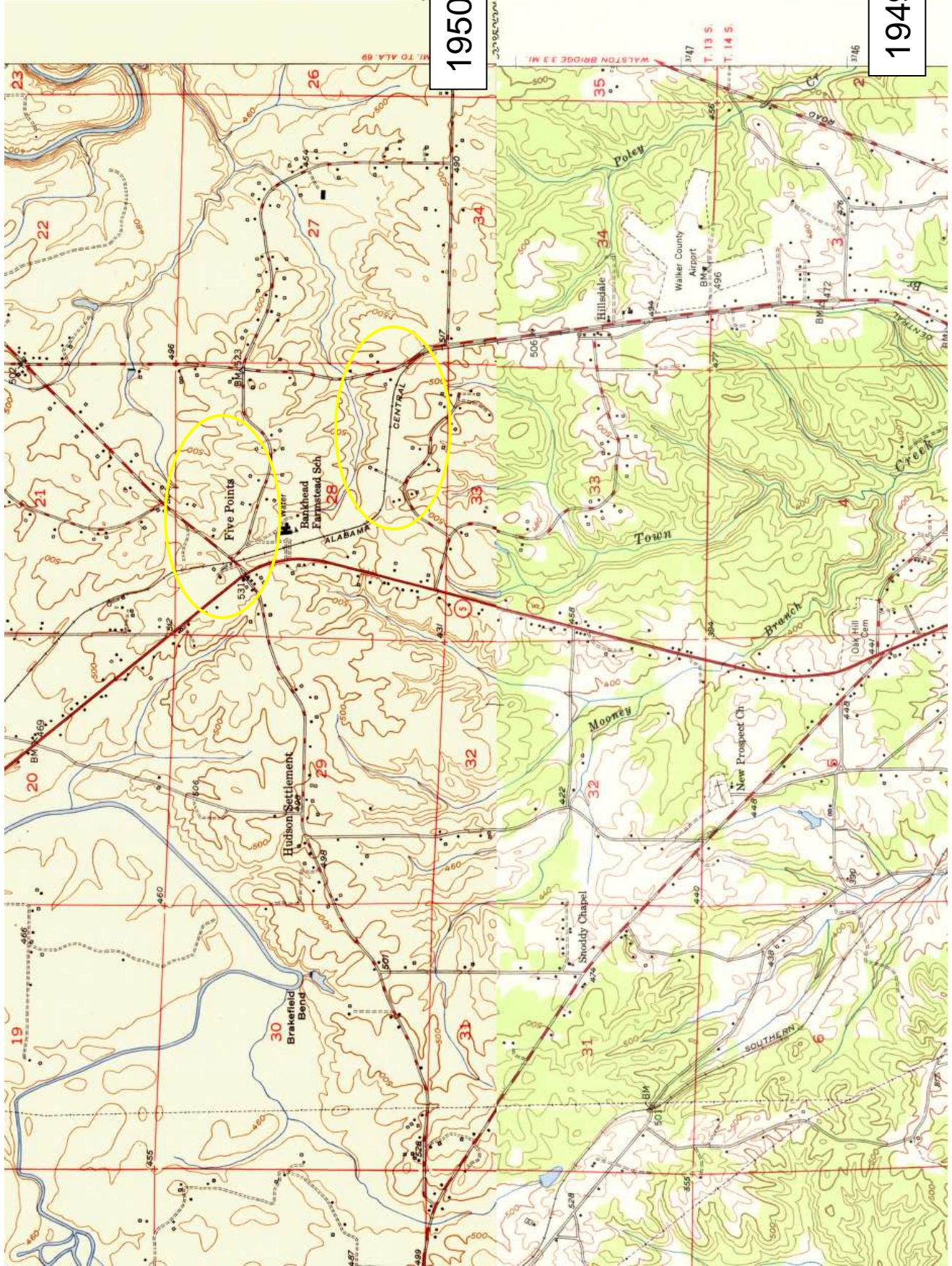
JASPER QUADRANGLE  
ALABAMA-WALKER CO.

7.5 MINUTE SERIES (TOPOGRAPHIC)

HALEYVILLE 30 MI. 351.17 N.E. (MANCHESTER)  
17 30' 1730' 570,000 FEET  
SOUTH LOWELL 2.4 MI. 475  
WALSTON BRIDGE 3.3 MI.  
HALEYVILLE 40 MI. MANCHESTER 2.5 MI.  
87° 15' 33° 52' 30"

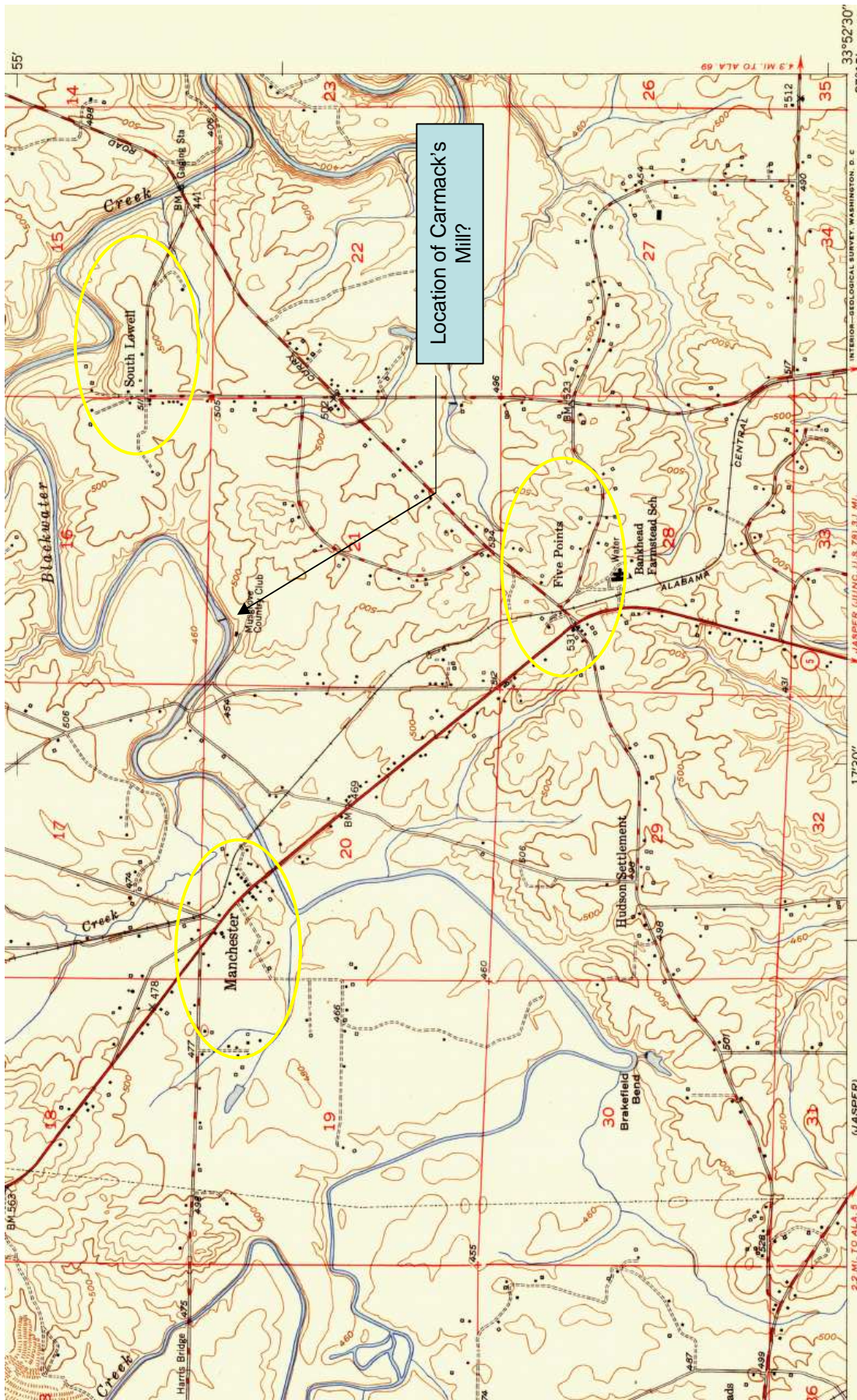


1949



1950

1949



Location of Carmack's Mill?

CORDON

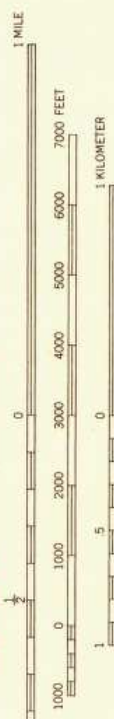
ROAD CLASSIFICATION

- HARD-SURFACE ALL WEATHER ROADS DRY WEATHER ROADS
- Heavy-duty 4-LANE 16 LANE Improved dirt
- Medium-duty 4-LANE 16 LANE Loose-surface, graded, or narrow hard
- U. S. Route

1950

MANCHESTER, ALA.  
N3352.5—W8715.7.5

EDITION OF 1950



SCALE 1:24,000

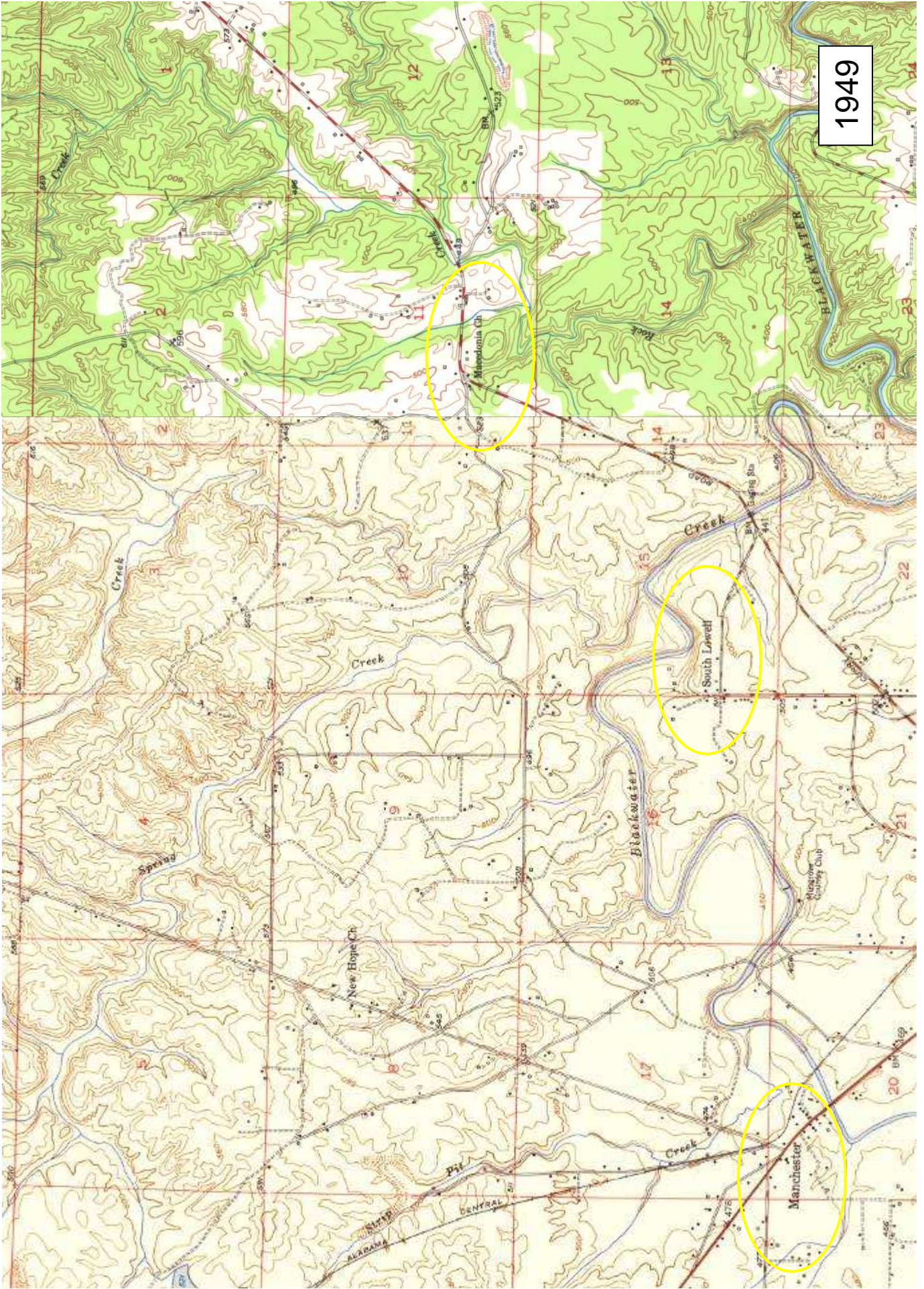
JASPER (QUINC. U.S. 78) 3.1 MI. PARRISH (I. MI.)  
JASPER (QUINC. U.S. 78) 3.1 MI. WALKER CO. AIRPORT 0.8 MI. 3 MI. TO U.S. 78  
JASPER (QUINC. U.S. 78) 3.1 MI. WALKER CO. AIRPORT 0.8 MI. 3 MI. TO U.S. 78  
JASPER (QUINC. U.S. 78) 3.1 MI. WALKER CO. AIRPORT 0.8 MI. 3 MI. TO U.S. 78

THIS MAP COMPLIES WITH NATIONAL MAP ACCURACY STANDARDS

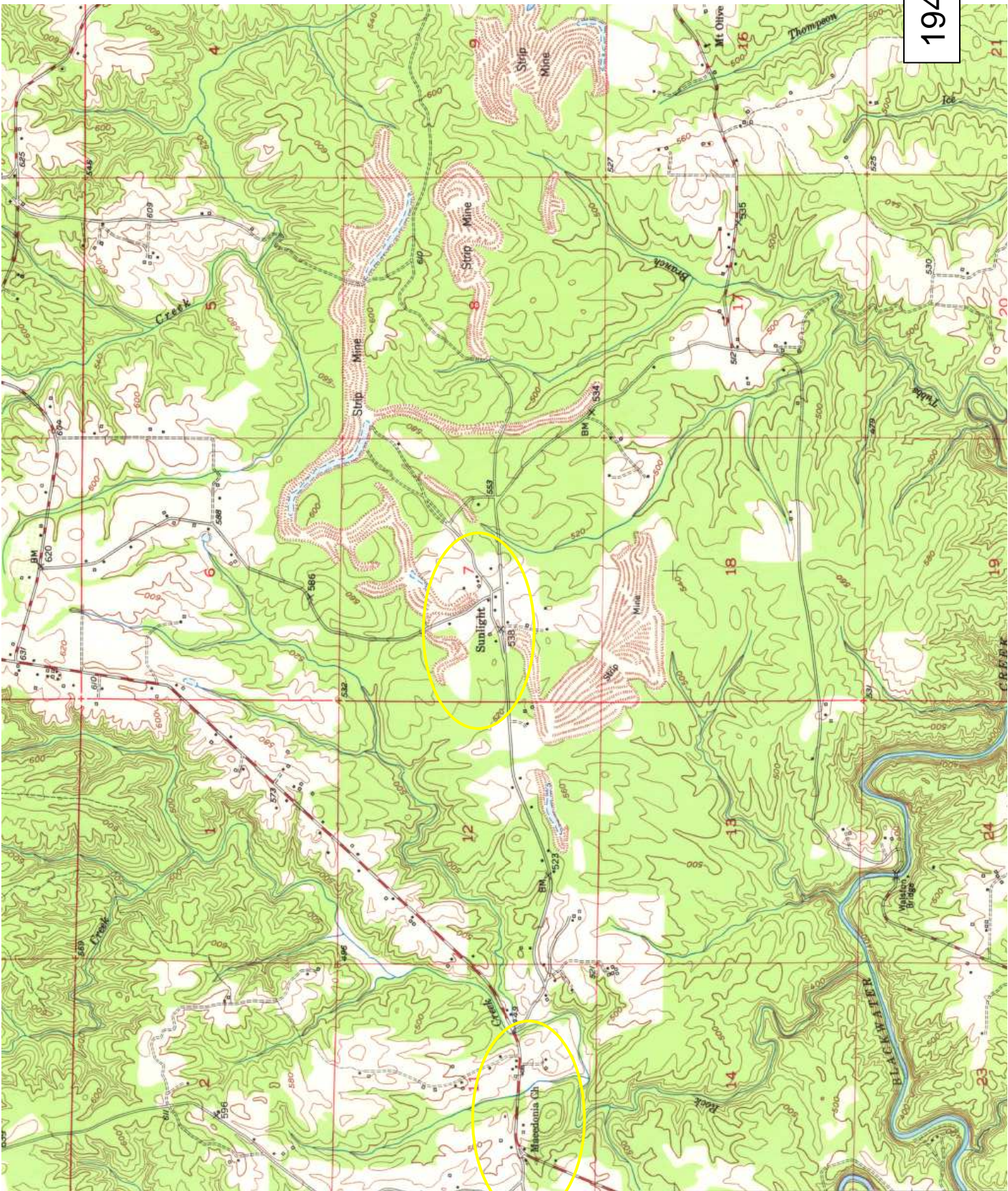
FOR SALE BY U. S. GEOLOGICAL SURVEY, WASHINGTON 25, D. C.

A FOLDER DESCRIBING TOPOGRAPHIC MAPS AND SYMBOLS IS AVAILABLE ON REQUEST

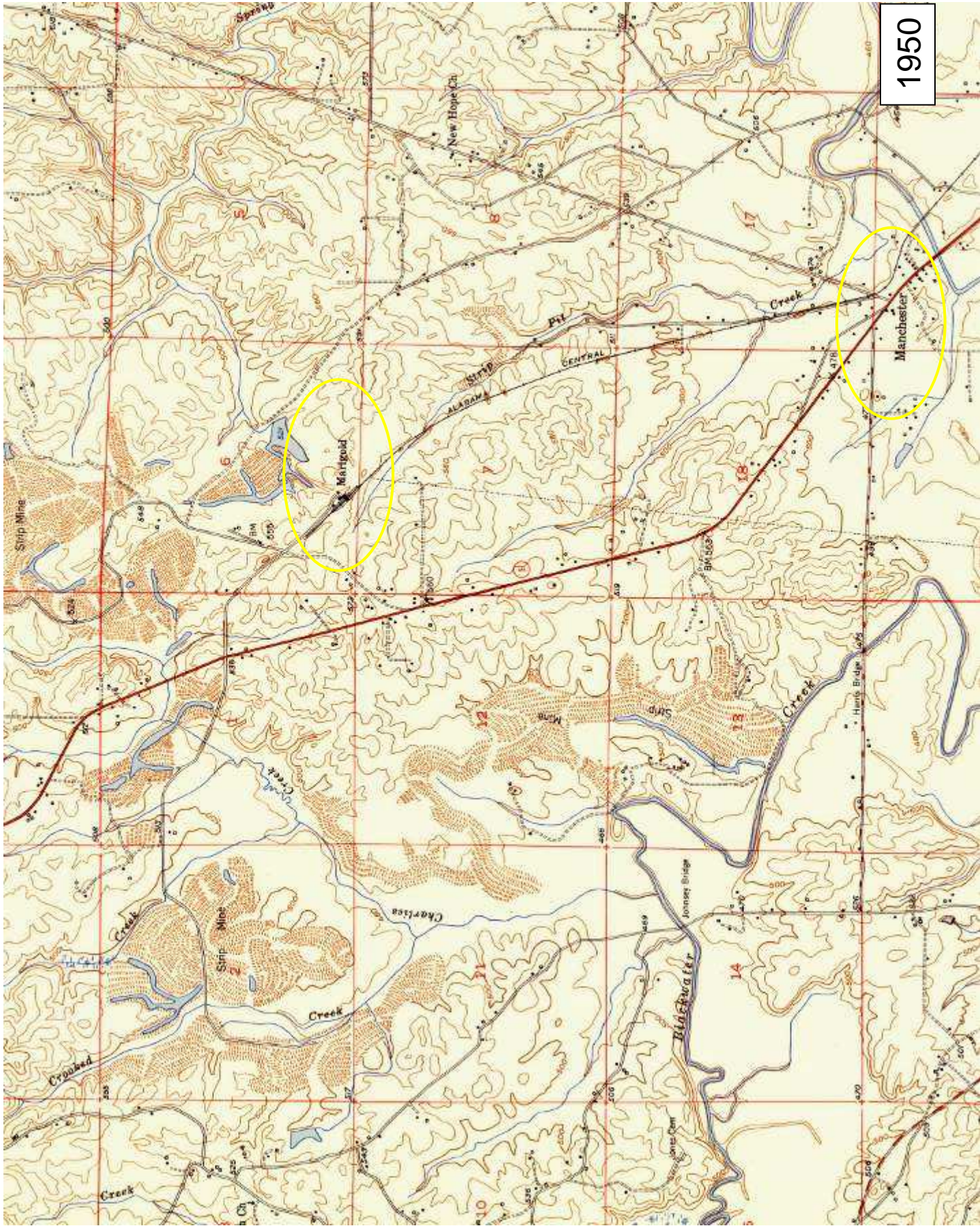
1949



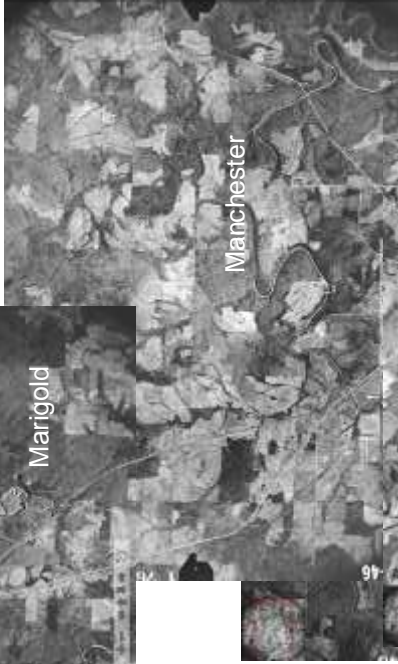
1949



1950







Composite imagery from UA Map Archive for 1938 and 1946

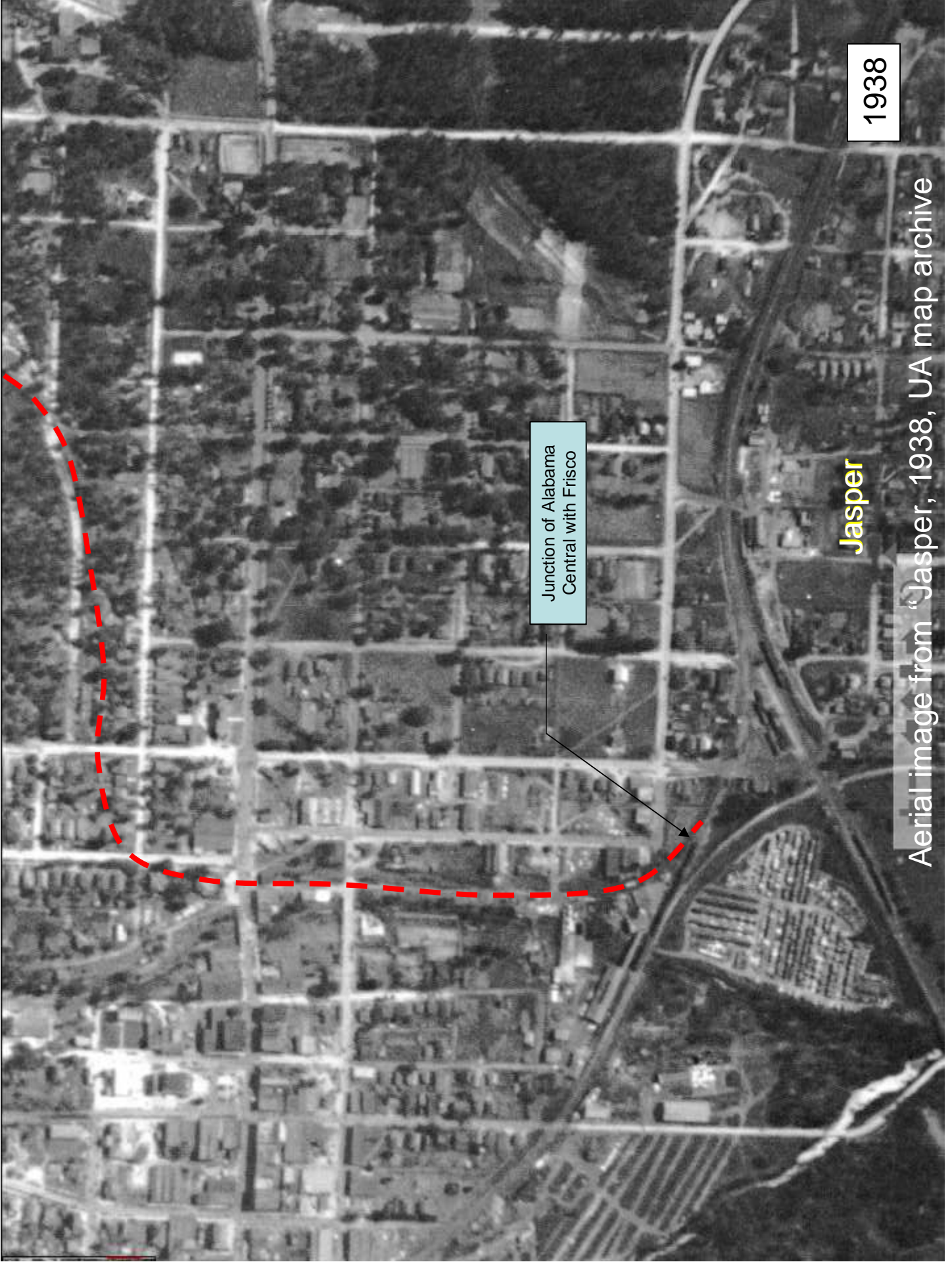
The aerials are not all at the same scale, but this appears to be a rough coverage of the entire route of the Alabama Central.

There is a small gap between the Manchester and the Sunlight coverage, and the photo series are not the same year.

# Jasper aerial, 1938 Overlay with 1949 USGS

UA map archive online

Assembled by [www.bhamrails.info](http://www.bhamrails.info)



Junction of Alabama  
Central with Frisco

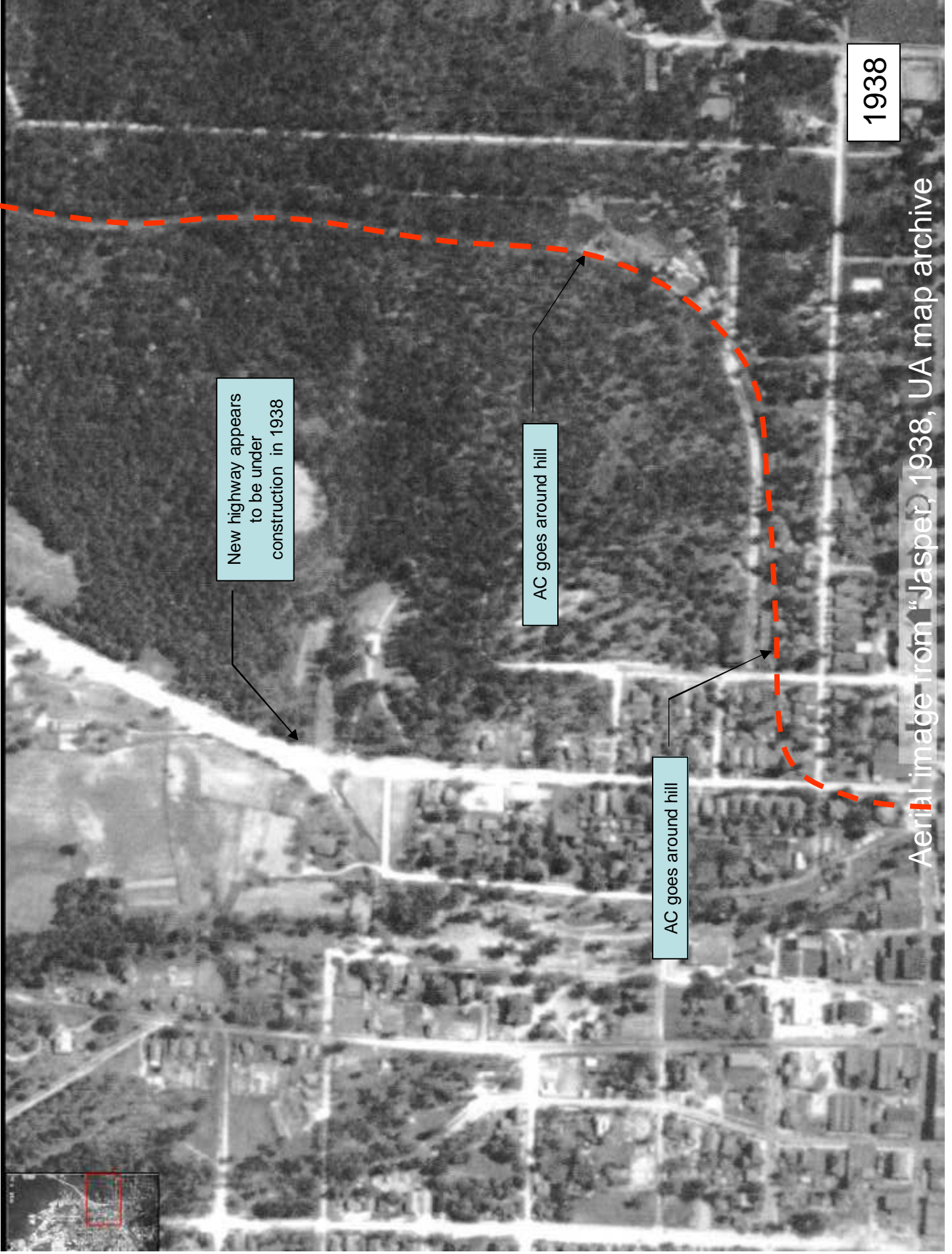
Jasper

1938

Aerial image from "Jasper, 1938, UA map archive

1949





New highway appears to be under construction in 1938

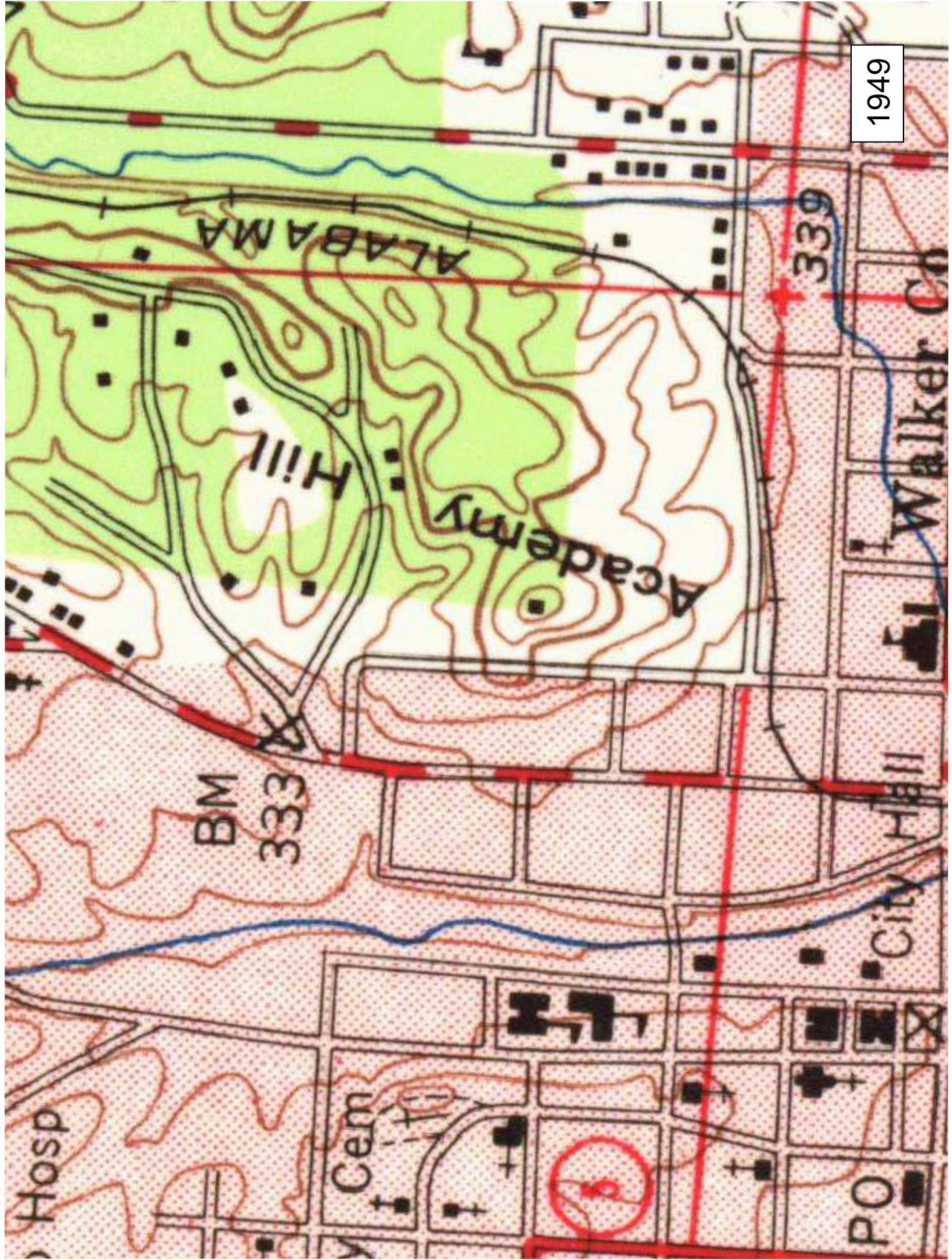
AC goes around hill

AC goes around hill

1938

Aerial image from "Jasper, 1938, UA map archive"

1949



ALABAMA

Hill

Academy

BM 333

339

Walker Co

City Hall

Hosp

Cem

PO

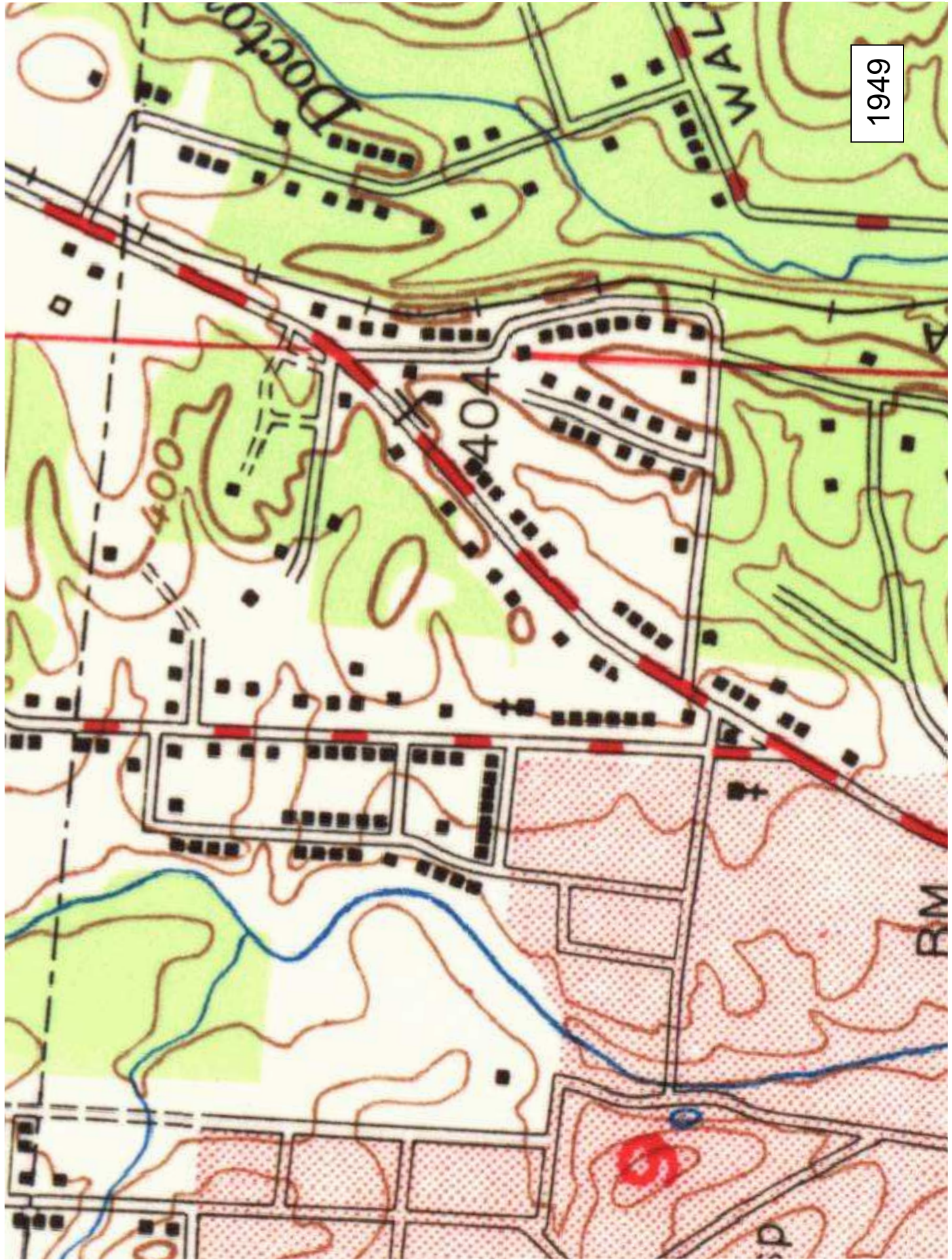


New highway appears to be under construction in 1938

1938

Aerial image from "Jasper, 1938, UA map archive

1949







1938

New highway appears to be under construction in 1938

Aerial image from Jasper, 1938, UA map archive

# Marigold aerial, 1938

UA map archive online

Assembled by [www.bhamrails.info](http://www.bhamrails.info)



1938

Aerial image from "Marigold, 1938, UA map archive"



Marigold

1938

Aerial image from "Marigold, 1938, UA map archive"



1938

Marigold

Aerial image from "Marigold, 1938, UA map archive"



1938

Aerial image from "Marigold, 1938, UA map archive"

# Manchester aerial, 1938

UA map archive online

Assembled by [www.bhamrails.info](http://www.bhamrails.info)



1938

Aerial image from "Manchester, 1938, UA map archive"



Manchester

1938

Aerial image from "Manchester, 1938, UA map archive"





1938

Aerial image from "Manchester, 1938, UA map archive"



1938

Aerial image from "Manchester, 1938, UA map archive"



Marigold

1938

Aerial image from "Manchester, 1938, UA map archive"